



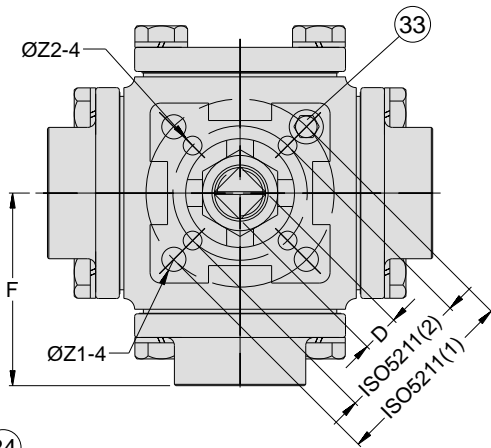
## 4-B

## 牙口三通式全流球阀

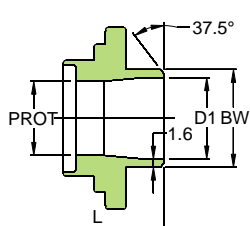
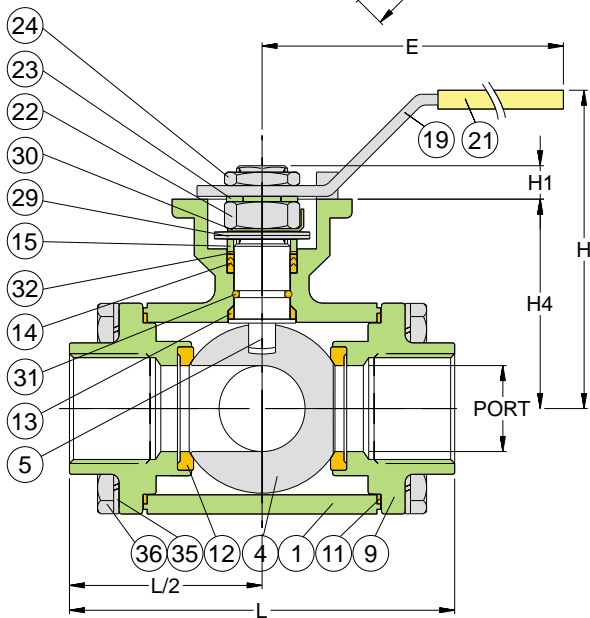
### 4-B T DN15~DN100 (1/2"~4")

牙口三通式全流球阀

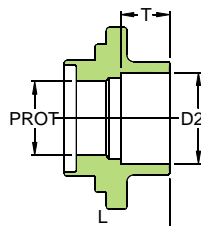
- 防爆中轴
- ISO 5211平台直接安装
- 工作压力:1000psi PN63 bar
- 适用温度范围: -20 to 180°C
- 挂锁装置
- 有四个阀座 (球垫座)
- L型埠或T型埠或X型埠可用360° 旋转把手



| TURN<br>PORT | 0° | 90° | 180° | 270° |
|--------------|----|-----|------|------|
| T-BALL       |    |     |      |      |
| L-BALL       |    |     |      |      |
| X-BALL       |    |     |      |      |



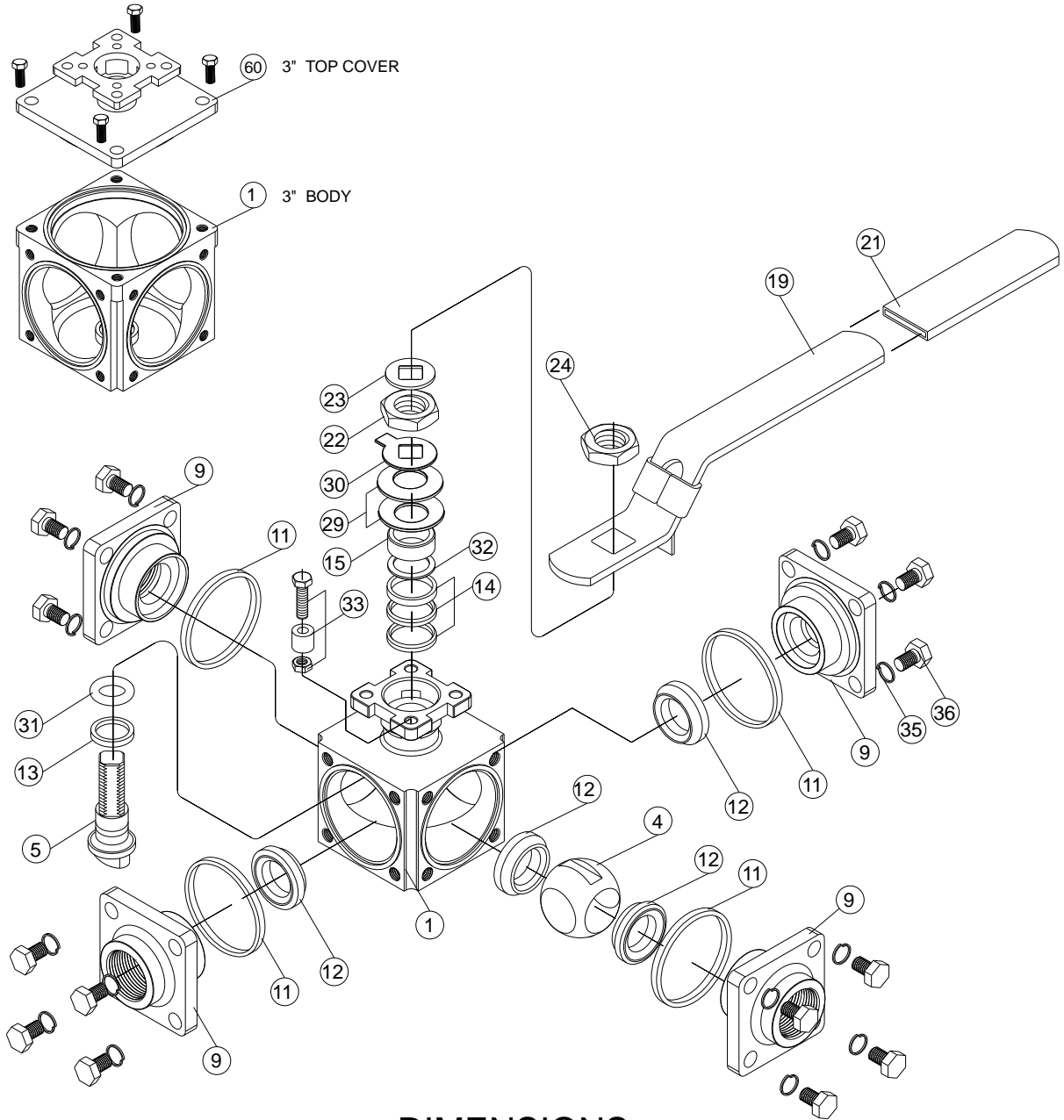
Butt weld end



Socket weld end

## MATERIALS LIST

| NO. | 部件名称 | PART NAME         | 材料                | MATERIAL | QTY  |
|-----|------|-------------------|-------------------|----------|------|
| 1   | 本体   | BODY              | ASTM A351 Gr.CF8M |          | 1    |
| 4   | 钢球   | BALL              | ASTM A351 Gr.CF8M |          | 1    |
| 5   | 中轴   | STEM              | SS316             |          | 1    |
| 9   | 侧盖   | END CAP           | ASTM A351 Gr.CF8M |          | 4    |
| 11  | 大薄片  | BODY SEAL         | PTFE.             |          | 4    |
| 12  | 中轴   | SEAT              | RTFE .            |          | 4    |
| 13  | 小薄片  | THRUST WASHER     | RTFE .            |          | 1    |
| 14  | 中口   | STEM PACKING      | RTFE .            |          | 1SET |
| 15  | 铁圈   | GLAND             | SS304             |          | 1    |
| 19  | 把手   | HANDLE            | SS304             |          | 1    |
| 21  | 胶套   | HANDLE COVER      | PLASTIC           |          | 1    |
| 22  | 下螺帽  | STEM NUT          | SS304             |          | 1    |
| 23  | 方型华司 | HANDLE WASHER     | SS304             |          | 1    |
| 24  | 上螺帽  | HANDLE NUT        | SS304             |          | 1    |
| 29  | 盘型华司 | BELLEVILLE WASHER | SS410             |          | 2    |
| 30  | 防松华司 | STOP WASHER       | SS304             |          | 1    |
| 31  | O型环  | O-RING            | VITON             |          | 1    |
| 32  | 抗磨片  | PACKING FOLLOWER  | PTFE.+25GF        |          | 1    |
| 33  | 档住   | STOP PIN          | SS304             |          | 1SET |
| 35  | 弹簧华司 | BOLT              | SS304             |          | 16   |
| 36  | 螺丝   | BOLT WASHER       | SS304             |          | 16   |



### DIMENSIONS

unit:mm

| SIZE   | PORT | L     | E     | H1   | H     | H4    | D    | Z1   | Z2  | F     | ISO 5211             | BW   | D1   | D2   | T    |
|--------|------|-------|-------|------|-------|-------|------|------|-----|-------|----------------------|------|------|------|------|
| 1/2"   | 16.0 | 96.0  | 186.5 | 9.0  | 89.0  | 47.8  | 9.0  | 6.0  |     | 48.0  | 42<br>F04            | 21.3 | 15.8 | 21.8 | 10.0 |
| 3/4"   | 20.0 | 107.0 | 218.0 | 11.0 | 98.0  | 58.2  | 11.0 | 7.0  |     | 53.5  | 50<br>F05            | 26.7 | 20.9 | 27.4 | 13.0 |
| 1"     | 25.0 | 126.0 | 218.0 | 11.5 | 102.0 | 64.0  | 11.0 | 7.0  |     | 63.0  | 50<br>F05            | 33.4 | 26.6 | 34.1 | 13.0 |
| 1-1/4" | 32.0 | 133.0 | 235.0 | 15.2 | 118.5 | 79.0  | 14.0 | 9.0  | 7.0 | 66.5  | 50<br>F05 70<br>F07  | 42.2 | 35.1 | 42.7 | 13.0 |
| 1-1/2" | 38.0 | 151.0 | 235.0 | 14.3 | 127.0 | 88.5  | 14.0 | 9.0  | 7.0 | 75.5  | 50<br>F05 70<br>F07  | 48.3 | 40.9 | 49.0 | 13.0 |
| 2"     | 50.0 | 166.0 | 252.0 | 17.8 | 139.0 | 105.8 | 17.0 | 11.0 | 9.0 | 83.0  | 70<br>F07 102<br>F10 | 60.3 | 52.5 | 61.0 | 16.0 |
| 2-1/2" | 65.0 | 175.0 | 252.0 | 17.5 | 165.7 | 117.3 | 17.0 | 11.0 | 9.0 | 87.5  | 70<br>F07 102<br>F10 | 73.0 | 62.7 | 77.0 | 16.0 |
| 3"     | 80.0 | 207.2 | 252.0 | 17.5 | 170.0 | 128.0 | 17.0 | 11.0 | 9.0 | 103.6 | 70<br>F07 102<br>F10 | 88.9 | 77.9 | 90.2 | 16.0 |